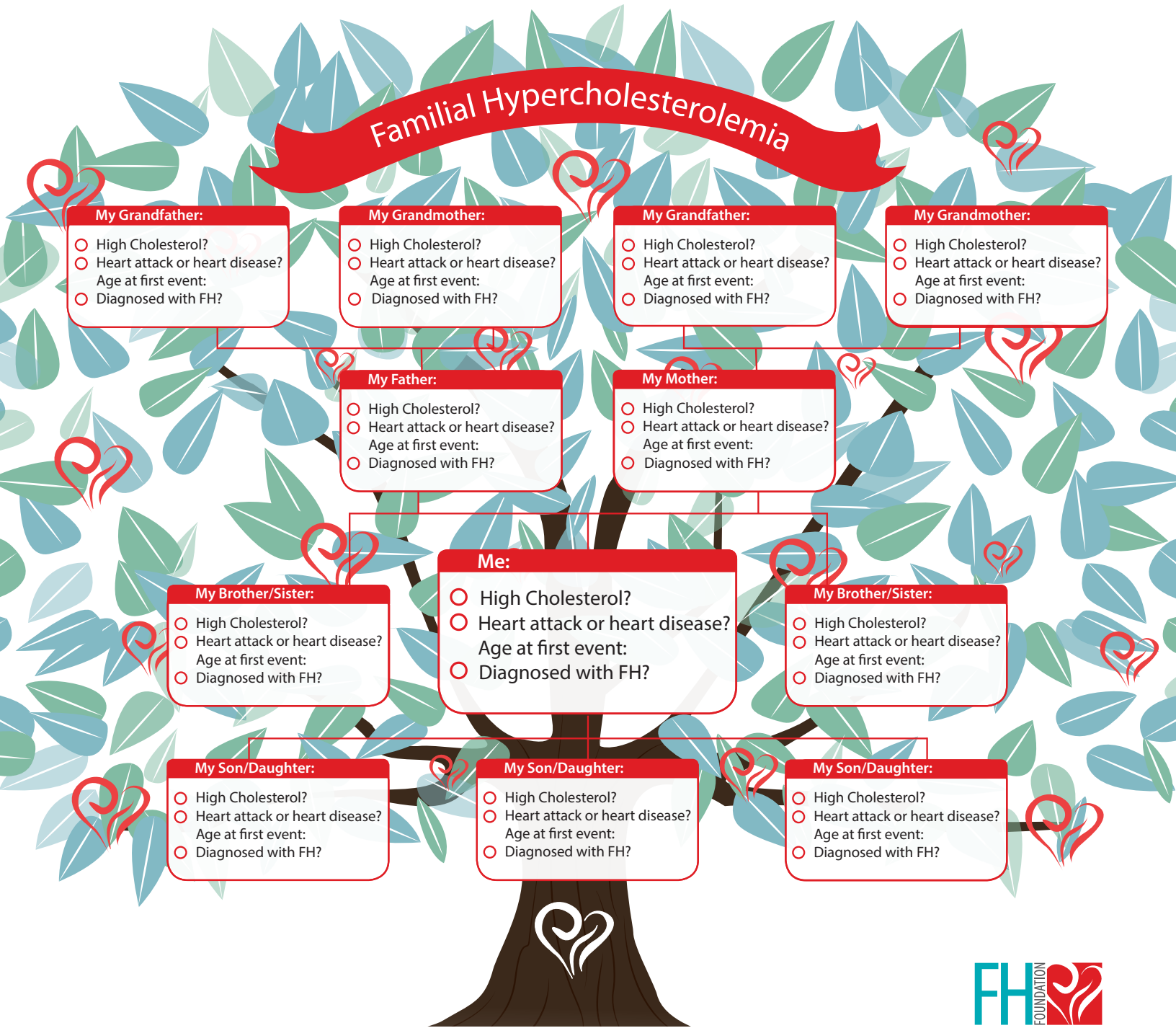


Familial Hypercholesterolemia (FH) in the Family Tree



Familial Hypercholesterolemia (FH) runs in the family and increases the risk for early heart disease. The good news: **FH is treatable!** Even with a family history of heart disease and/or heart attacks, you may prevent it through early detection and finding out the right treatment plan for you.

It's time to know about your family's heart health history. Fill out the tree above to get your family on the right path to healthy hearts.